

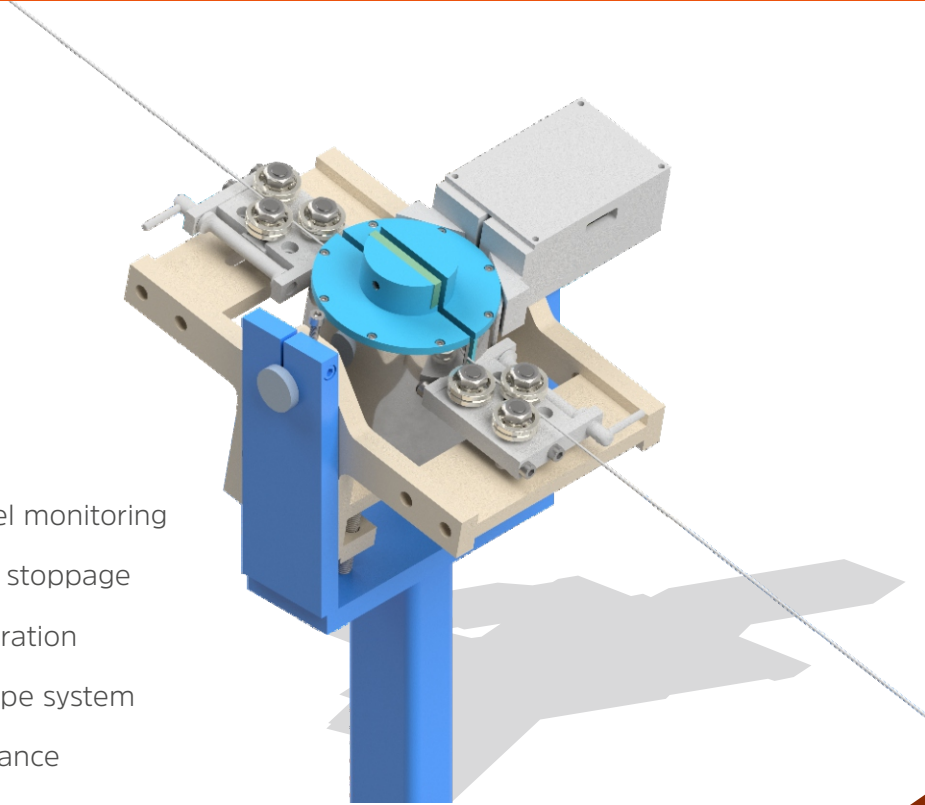
Flux Checker for Flux Cored Wire



www.mepstec.com

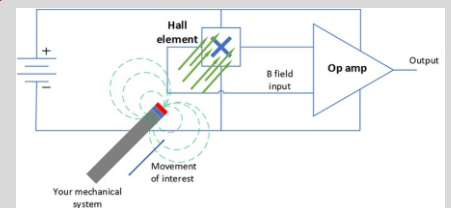


info@mepstec.com



- Online flux level monitoring
- Automatic line stoppage
- Easy wire calibration
- Integrated recipe system
- Flux level tolerance
- Easy find un-fluxed zone via encoder
- Logs all data to integrated database

How Is Working?



Hall sensors render precise and continuous measurements based on magnetic field strength. Within the Hall effect sensor, the Hall element sends the electric potential difference to an amplifier in order to make the change in voltage large enough to be perceived by the embedded system

When flux cored wire passes through to magnetic field, magnetic field changed and hall sensors detect to variation. Later on, signal processing on the MCU...



MACHINERY - DIGITALIZATION - AUTOMATION